

# DSSP516 Walk Through Metal Detector

With Temperature Measurement



# FEATURES

## **Sensitivity of detection:**

The highest sensitivity detected a one RMB coin in the middle of the door, which would not be misreported or misreported. It could detect precious metals such as copper, aluminum and zinc above 150 grams, or controlled knives and guns, excluding the influence of belt buckles, leather shoes and bras.

## **Anti-interference design:**

According to the surrounding environment, the starting frequency is automatically set to avoid interference, and when multiple doors work side by side, they are close to each other, which have no significant impact on the detection performance.

## **Frequency set:**

11 kinds of frequencies can be set automatically, and different tones can be set at different frequencies. Frequency can also be set manually.

## **Sensitivity adjustable:**

Sensitivity can be adjusted as needed, a total of 1000 sensitivity.

## **Passenger count:**

Bilateral contraption infrared can accurately detect the number of people passing through and alarm number.

## **Four sides alarm bars:**

Two sides of the door body are equipped with LED lights, which can visually display the area where prohibited items are located by positioning lights.

## **Sound-light alarm:**

9 types of alarm sound can be selected, each of which has an 8-level adjustable tone and an adjustable alarm time.

## **Panel design:**

LED display, Chinese and English panel switch.

## **Shockproof design:**

The world's original seismic design, in the wind or artificial shaking under the false alarm.

## **One key set:**

The built-in smart chip can store the set value of detection sensitivity recommended by a variety of places, making it convenient for users to choose quickly.

## **Frame materiel:**

PVC appearance, and imported brand material is completely the same, beautiful, generous, fire, corrosion, moisture and anti - collision, deformation.

## **Remote control:**

Use the remote control to set the parameters. The parameters can be password protected, which can't be operated by unauthorized personnel.

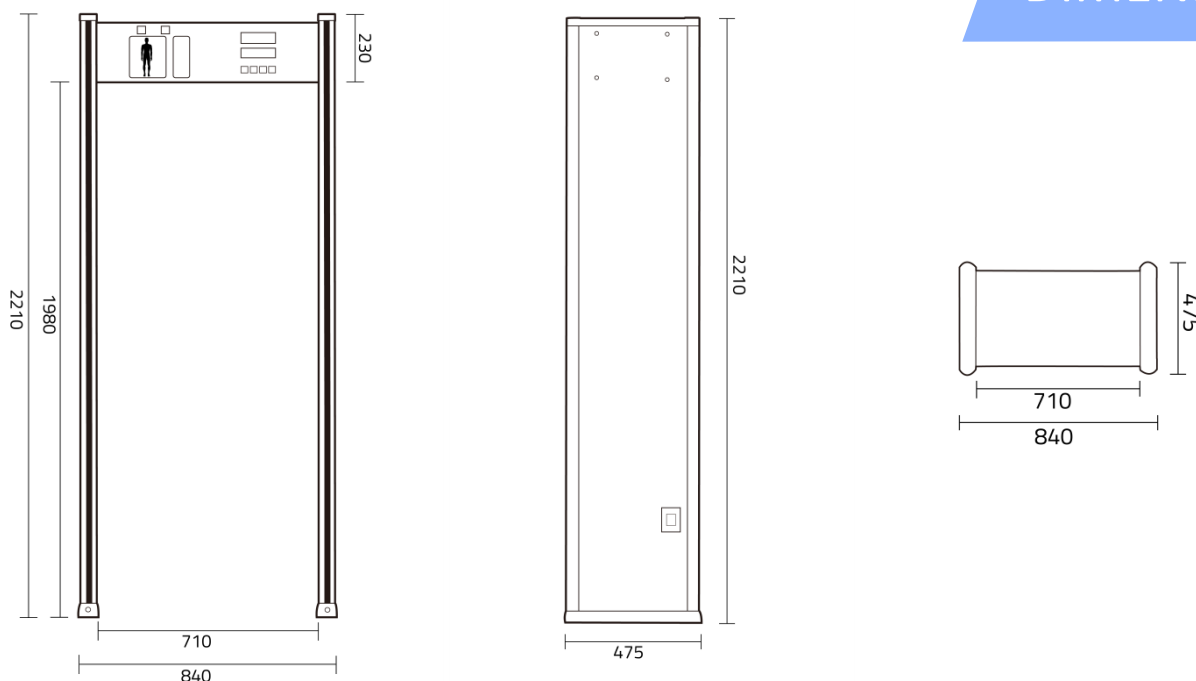
## **Network management:**

Reserved communication interface, can be connected with computer, camera, three rollers, monitoring, statistical detection, adjust the security gate parameters.

## **Safety protection:**

Comply with international safety standards, it is harmless to heart pacemaker wearers, pregnant women, magnetic media, etc.

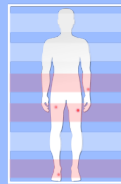
# DIMENSIONS



# SPECIFICATIONS

Model No.	DSSP516
Brand	Daosafe
Framework Material	High-pressure Laminate (HPL)
Outer Dimension	2210(H)×840(W)×475(D) mm
Inner Dimension	1980(H)×710(W)×400(D) mm
Gross Weight	70kg/pcs
Power Supply	AC187V~242V, 50/60Hz
Power Consumption	<15W
Working Frequency	Adjust according to the installation environment
Operation Temperature	-10 °C ~ 40 °C
Operation Humidity	0 ~ 95% (No freeze)
Detection Defense Zone	12 Zones Standard (18 zones optional)
Output Connection	PC connection (optional)
	Turnstile gate connection (optional)

## DETECTION RANGE ▶



### Zone Alarm Indication

When a plurality of metals in different positions of the human body pass through the security gate, the alarm is raised simultaneously and the position of the plurality of metals can be indicated.



### Thermometry Detection

Led panel shows the value of temperature when people approach the point for temperature measuring and allows screeners know whose temperature is abnormal.



### Detection Area Display

Led indicators on side of panels are to accurately display where the prohibited goods are.



### Metal Items Alarm

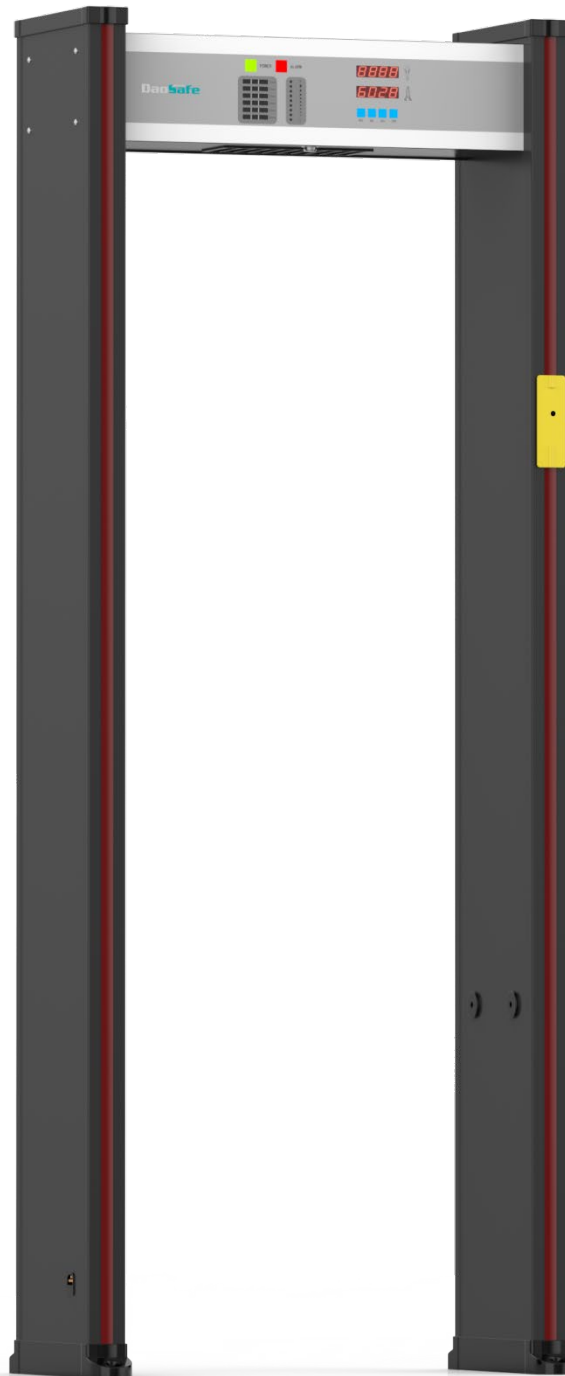
Ultra-high detection sensitivity, excluding the influence of belt buckles, leather shoes and bras, It could detect precious metals such as copper, aluminum and zinc above 150 grams, or controlled knives and guns



### Metal Weapons Alarm

Able to fast detect contraband weapons and accurately distinguish ferromagnetic and non-ferromagnetic metal objects.

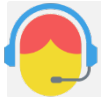
# PRODUCTS HIGHLIGHTS



## Infrared Detector Passenger Number

**Infrared temperature metal detector:**  
Can detect half the size of paper clip of metal

**Passenger number:**  
Bilateral infrared, can accurately detect the number of people



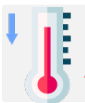
## Real-time Voice Broadcast

Temperature is abnormal, high temperature sound and light alarm



## 12 Detection Areas

12 independent detection areas, each area 1000 degree sensitivity adjustment, accurate display of metal position



## Low Temperature Compensation Function

With low temperature weather compensation function, up and down adjustment of 2°C, low temperature below zero can work normally

## LED Panel



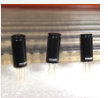
LED panel show the value of temperature, high and low temperature up and down line can be set

## Non-touch Temperature Measuring



Non-touch temperature measuring far away 1~50cm distance, the fastest detection time is less than 0.5 seconds

## High-end Parts



Imported from Belgium, Melexis core, medical high precision sensor IR temperature module

## Network Output Interface



Network output interface can be customized to provide gateway, face recognition, ID card reading information output and secondary development

## ● Human Temperature Screening:

The built-in high-precision micro-24-hour dynamic infrared temperature monitor provides all-directional temperature scanning and screening for passers.

## ● Original Flight Alarm Function:

Throwing a metal object through the middle of a door also gives an accurate warning.

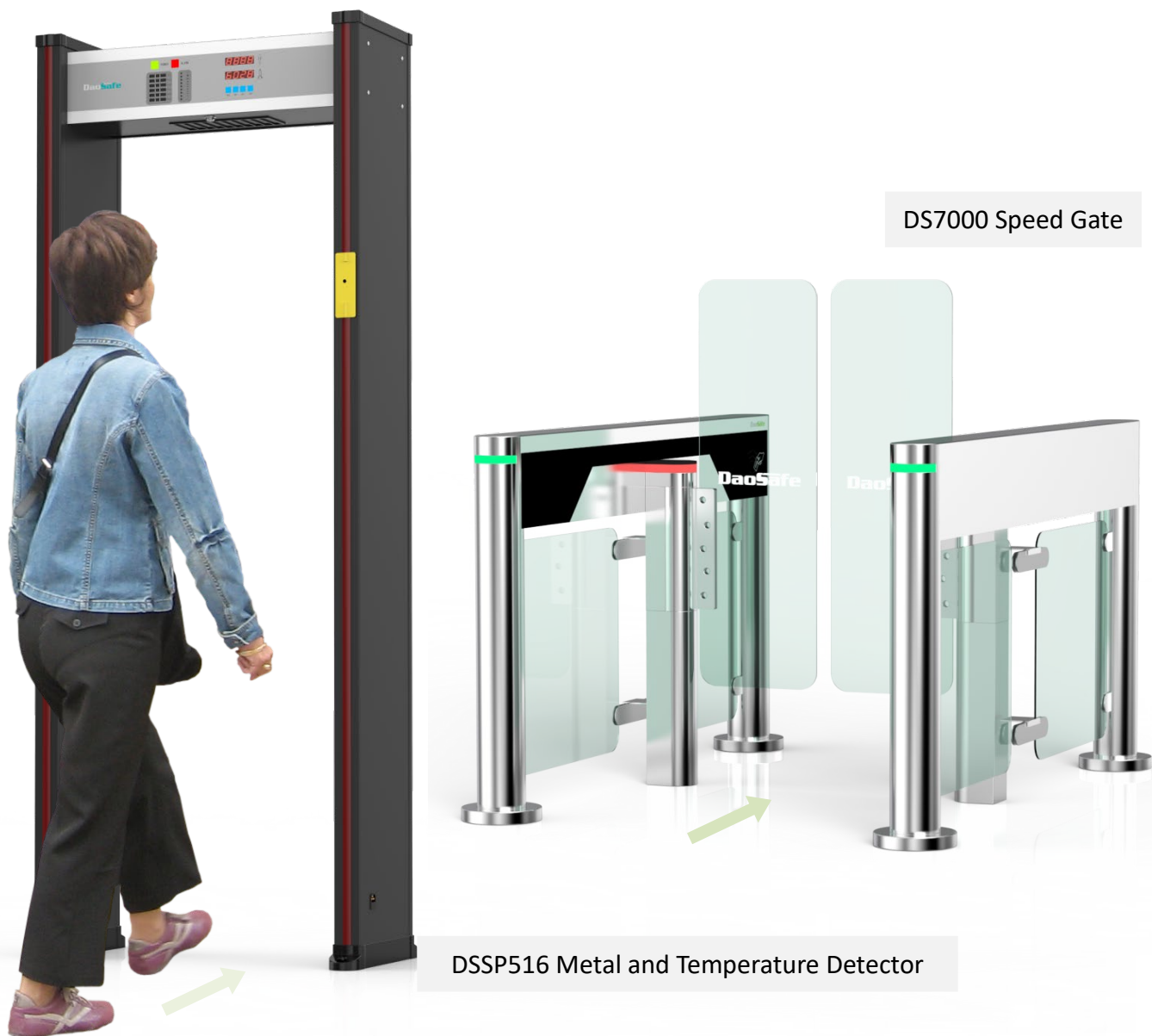
## ● Ultra Low Sounding Altitude:

Any metal object more than 2CM above the ground entering the detection area can alarm

## ● Startup Self-diagnosis Function:

Self-check the system and display the test results.

# We don't only provide products, we offer full range access control solution



01

**\*Turnstile gate and metal temperature detector integrated by wiring**

Personnel pass through the detector, detect the body temperature, knife, gun and other metal objects. If detection passed, turnstile will automatically open and people will pass. If detection rejected, the detector alarms and turnstile remains closed.

02

**\*Turnstile gate and metal detector used separately**

Step 1, Personnel pass through the detector, detect body temperature knife, gun and other metal objects  
Step 2, Personnel who passed the detector via the turnstile to verify the identity (Rfid card, fingerprint, face, password, QR code...).

If verification passed, turnstile opens.  
If verification failed, turnstile remains closed.