

DS318G WATERPROOF

Description

SAFETY
LEVEL

AESTHETICS

COSTING

- STARK optical flap turnstile DS318G outstanding features: waterproof design, fast open/close speed, luxury golden exterior, arm width optional.
- Waterproof: IP65 level, no afraid of water or rain. It is ideal for both indoor and outdoor settings.
- The passing width can reach to 600mm for normal passage, and can support 900mm arm(DS218G/DS7200G) for wide passageway, wheelchair, and pedestrian with large luggage can also pass.
- Swing arm are Plexiglas with dazzling LED light which are more attractive and impressive, easily to catch pedestrian's eyes and enhance the artistry of the sites.
- The tempered transparent glass side panels surrounded with dazzling decorative LED light bar make the whole gate compact and unique, enhanced the profile aesthetic and stylish, which would be perfect for high-end place.
- It has standard relay signal, which can be integrated with any kind of third-party access control system (e.g.: RFID, Fingerprint and Biometric reader device).
- It is suitable for areas with general pedestrian traffic (e.g.: hotel, gym, building, bank, shopping mall, reception area and so on).

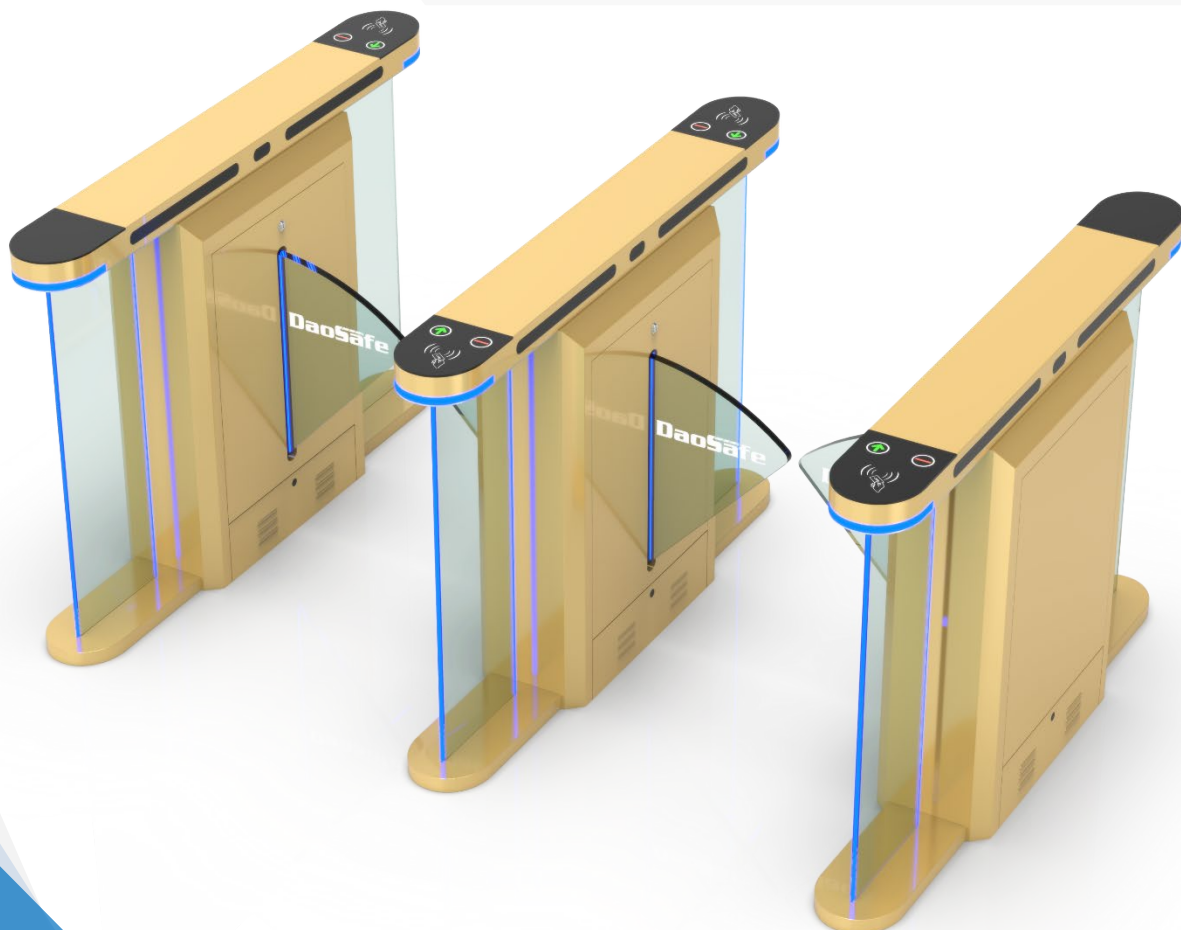
Features

- ✓ Long-life performance, high operation dependability and fast response.
- ✓ The whole system runs smoothly, low noise, no mechanical impact.
- ✓ Single directional or Bi-directional is selectable.
- ✓ Automatic reset function: swing arms will lock automatically within 5s (can be setting) if passenger delay to entry.
- ✓ When power is off, swing arms will open automatically, which is complying with fire safety requirements.
- ✓ LED indicator (red × means no entry; green → means entry).
- ✓ Infrared sensor alarm function, in case of illegal intrusion and reverse intrusion.
- ✓ Anti-intrusion function, the speed gate is locked automatically until valid opening signal input.
- ✓ Anti-reverse function, the turnstile alarms if someone wants to entry in the reverse direction.
- ✓ Anti-trailing function, the speed gate alarms if someone wants to burst in without permission.
- ✓ Anti-collision and anti-kick function, it designed with consolidated and more durable mechanism, will not break even someone collide it.
- ✓ Mechanism self-protection: the arm will reset automatically if it is off position. It's movement will not be broken or damaged even after hit.
- ✓ It has the fastest open and close speed rate and can be adjusted.
- ✓ In case of emergency, the arms will open automatically to allow free passage when power off.
- ✓ 3-year warranty support.



We don't only offer turnstile gates

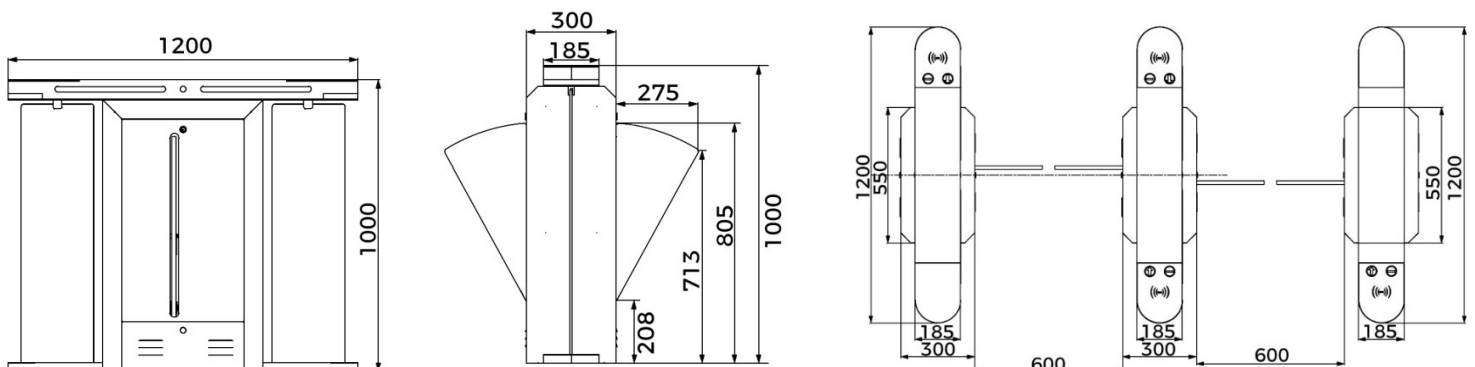
We offer full access control solutions

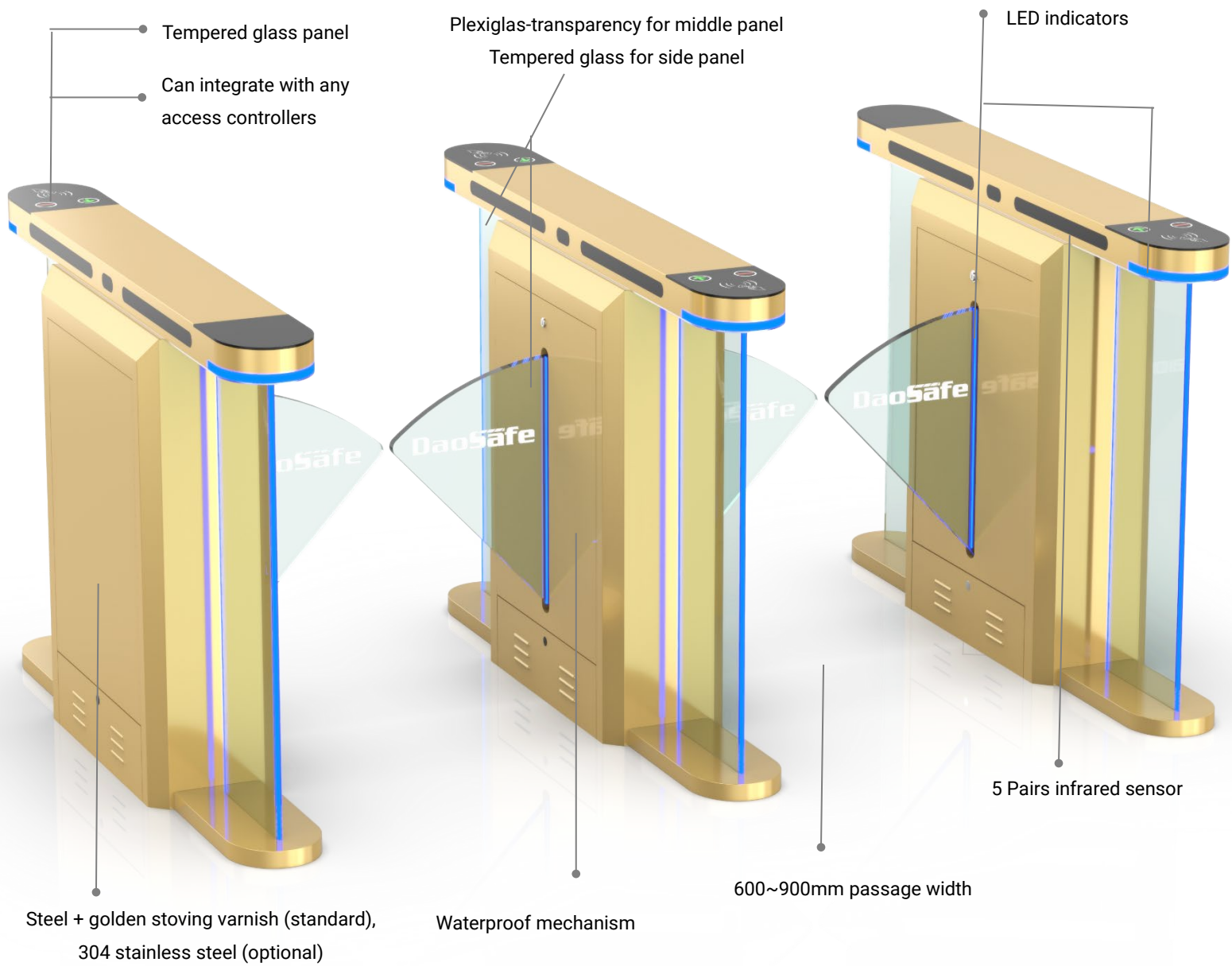


Specification

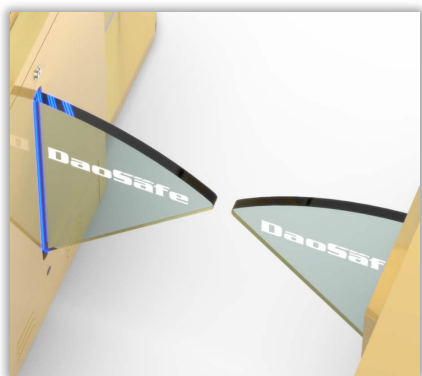
Model No.	DS318G
Type	STARK optical flap turnstile
Brand	Daosafe
Framework Material	Steel + golden stoving varnish (standard), 304 stainless steel (optional)
Arm material	Plexiglas–transparency for middle panel, Tempered glass for side panel
Dimension	1200 * 185 * 1000mm
Passage Width	600mm (standard), 900mm (handicapped)
Net Weight	70kg/pcs (single core), 80kg/pcs (double core)
Passing Direction	Single directional / Bi-directional
MCBF	12 million
Power Supply	AC220V/110V, 50/60Hz
Operation Voltage	24V DC
Power Consumption	40W
Operation Temperature	-20 °C – 75 °C
Operation Humidity	0 ~ 95% (No freeze)
Working Environment	Indoor / Outdoor(IP65)
Flow Rate	55~60 people per minute
LED Indicator	Two LED indicators on top: green → entry, red × no entry
Infrared Sensor	5 pairs (3 pairs on the top +2 pairs on the below)
Emergency	Automatic arm open when power off
Communication	Dry contact, Relay signal, RS485
Flexibility	Integrate with any access control

Dimension





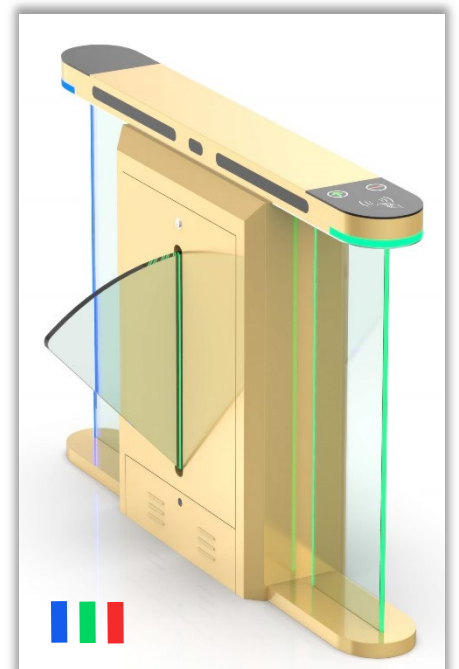
DS318G HIGHLIGHTS



Plexiglas-transparency arm

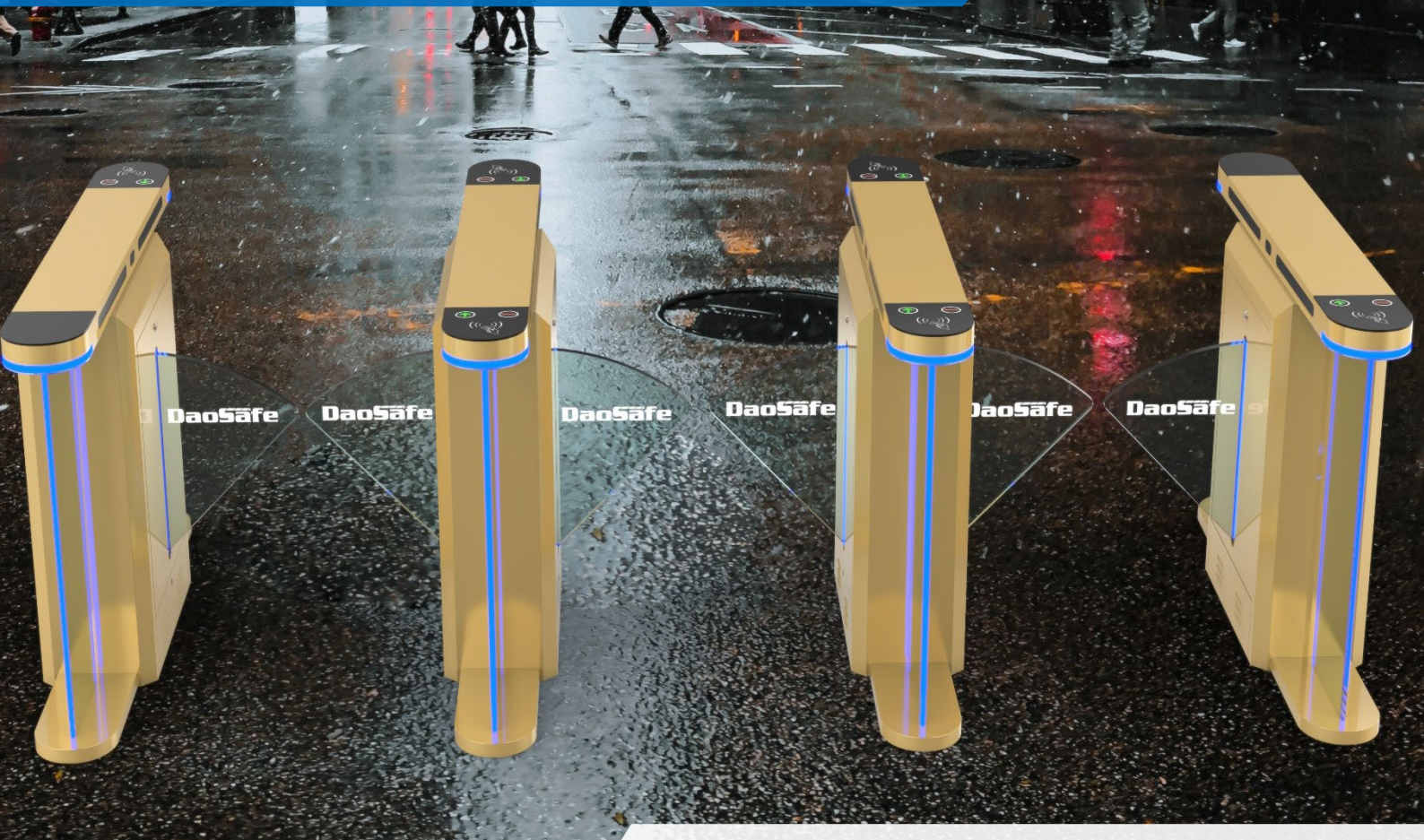


Tempered glass swipe window



Blue/green/red LED bar

DS318G STARK Flap Turnstile Outdoor Use

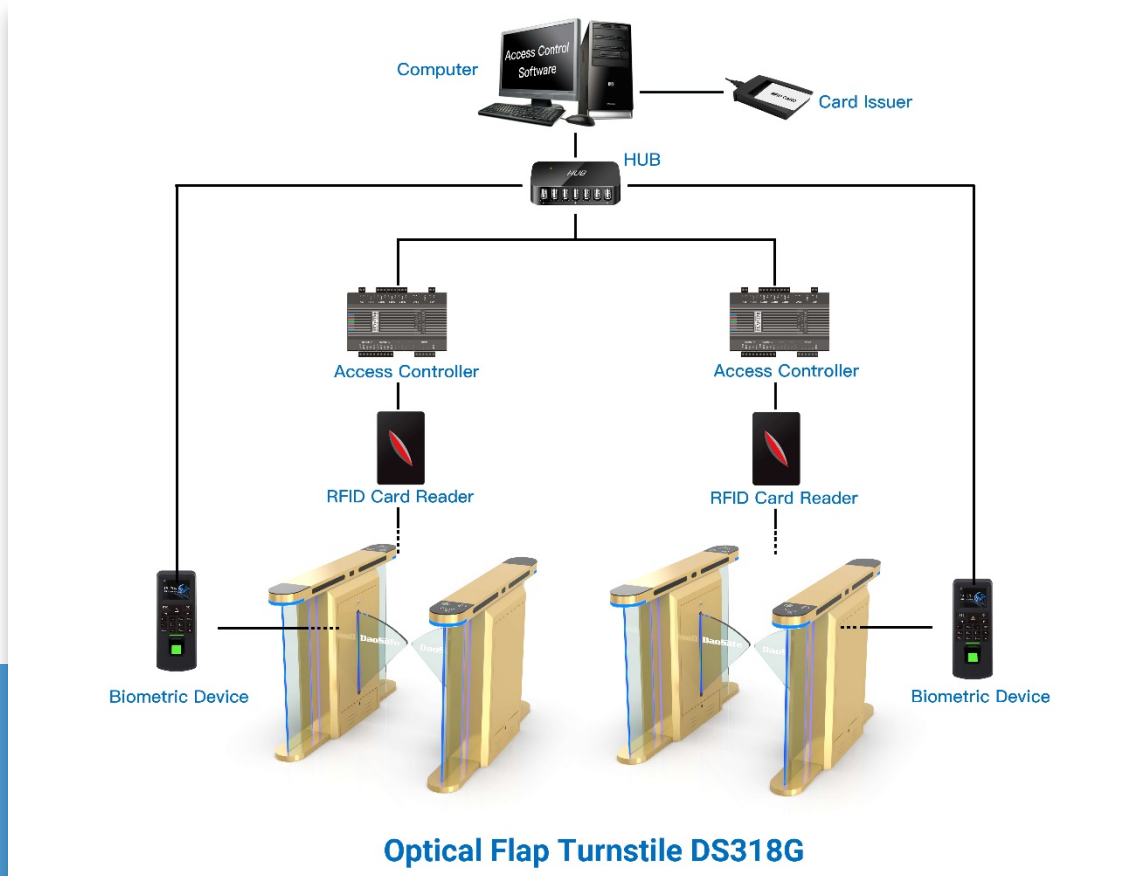


Handicap + Standard

DS318G with IP65 waterproof level can be installed at outdoor and usually work with DS218G or DS7200G for handicapped passage.



System Integration Figure



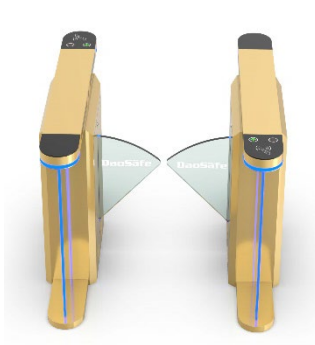
REMARK:

- The turnstile circuit board support to work with any relay signal, and support to integrated with any 3rd party access control system: RFID, BIOMETRIC, QR/BARCODE and so on.
- Multiple access controller board can be connected by TCP/IP through net cable, control by central computer.
- The turnstile circuit board is also with RS232 output, it can connect with mini PC. Turnstile will open once received simple code by computer, which is suitable for the complicated like ticketing system solution.

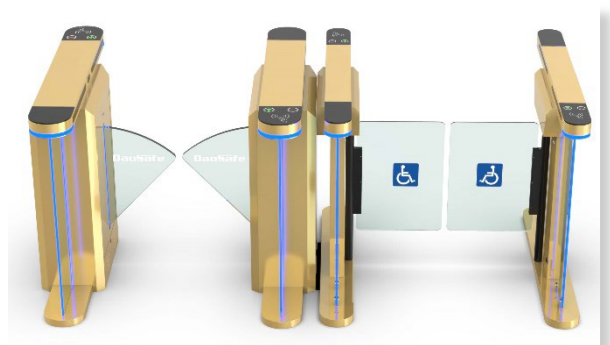
STARK optical flap turnstile DS318G outstanding features: waterproof design, fast open/close speed, stainless steel and luxury golden exterior optional.



304 Stainless Steel

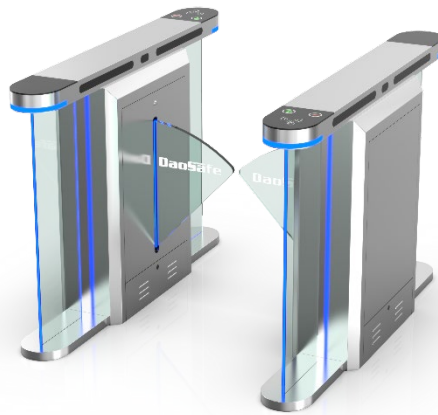
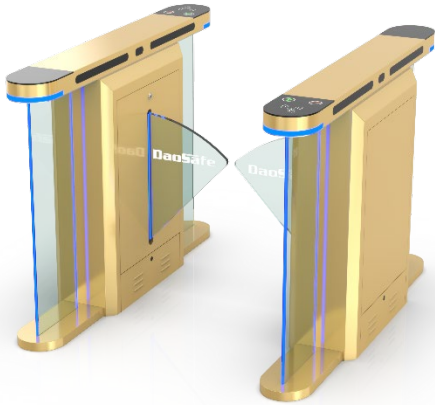


Gold Color



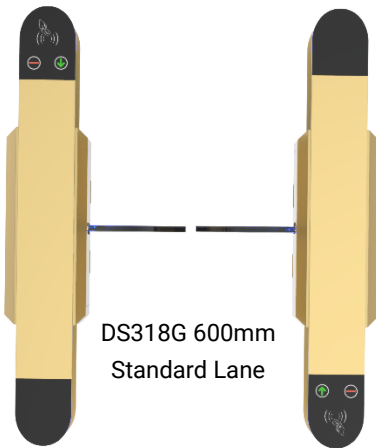
Standard + Handicapped Lane

Material & Color

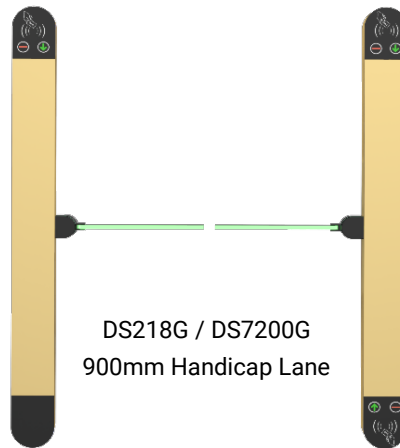


Steel + gold stoving varnish (standard)
Stainless Steel (optional)

Passage Width



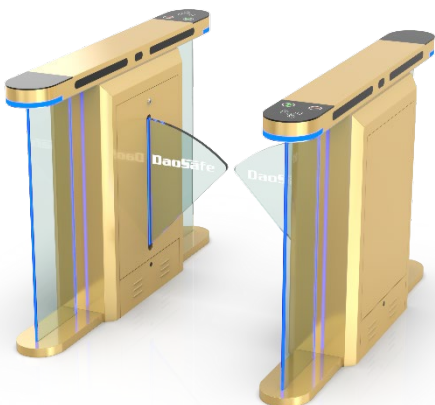
DS318G 600mm
Standard Lane



DS218G / DS7200G
900mm Handicap Lane

The passing width can reach to **600mm** for normal passage, and can work with **900mm** arm(DS218G/DS7200G) for wide passageway, wheelchair, and pedestrian with large luggage can also pass.

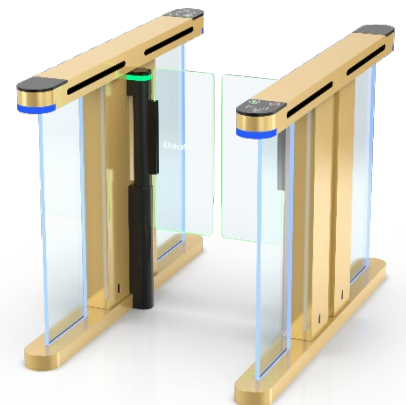
Stark Turnstiles



DS318G Optical Flap Turnstile



DS218G Optical Swing Turnstile



DS7200G Speed Gate