

Optical Swing Turnstile

CATALOGUE



Warranty
3 Years



Make quality turnstile,
and make you secure.

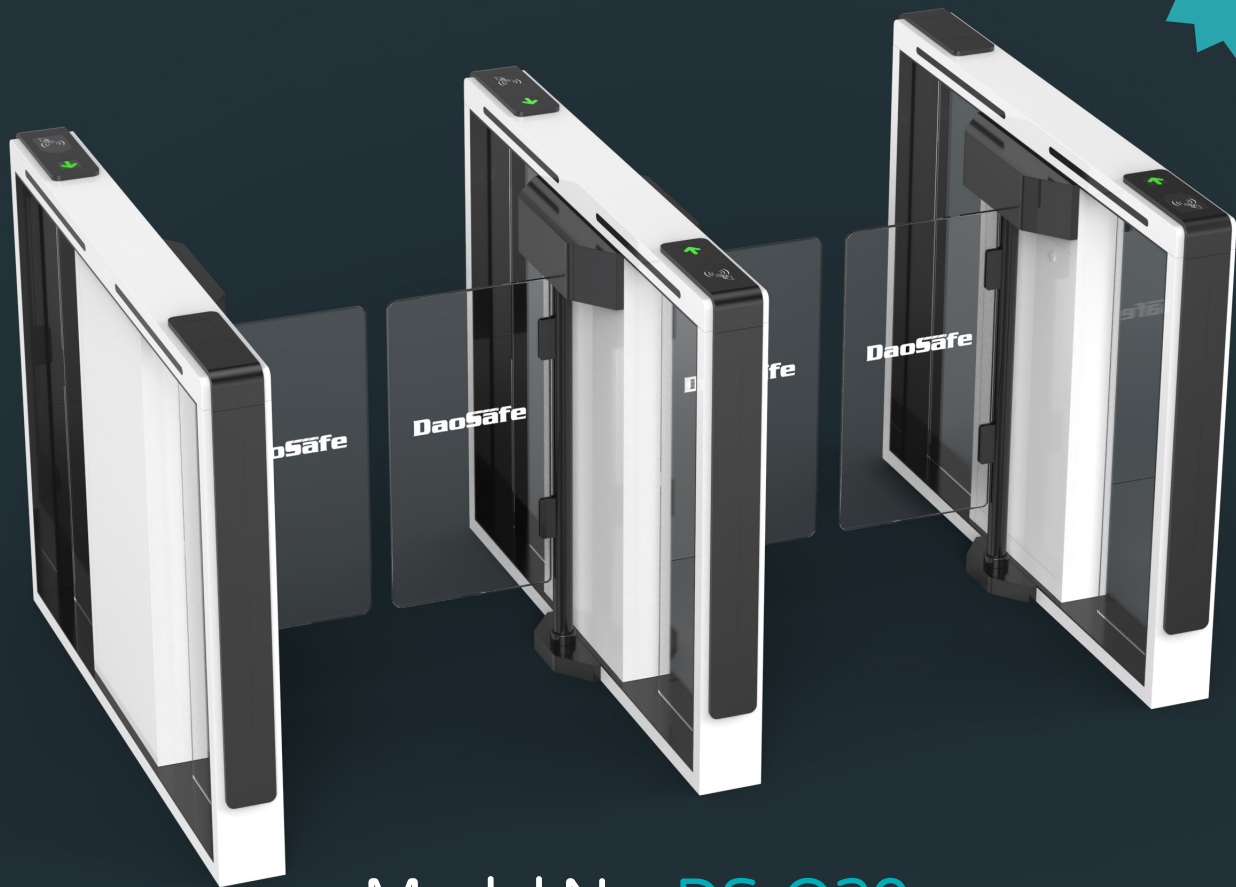
DaoSafe

Global Turnstile Gates Supplier

www.daosafe.com

Optical Swing Turnstile

NEW



Model No. **DS-Q20**



With 1100mm wide passageway, supporting wheelchair, large package and emergency purpose.

Super- elegant and European stylish turnstiles

DS-Q20 Quantum optical swing turnstile is to control pedestrian entry or exit in restricted areas, usually used in high pedestrian traffic flow in both directions.

Design with classic black, white color appearance, elegant and timeless pairing, perfect for using at high end applications.

Material: steel + white and black stoving varnish + tempered glass

Size: 1400 * 120 * 978mm

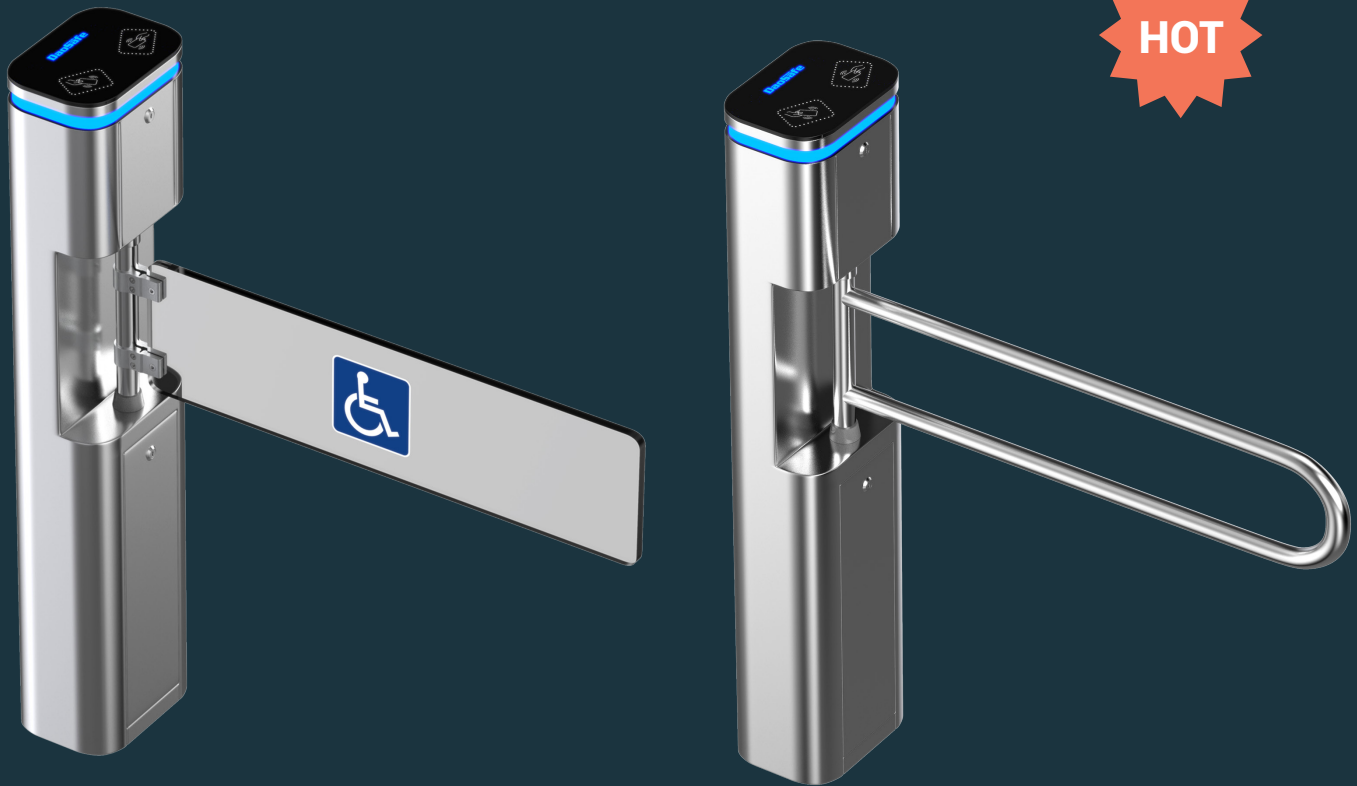
Net weight: 65kg/pcs

Pass rate: 40 person/min

Pass width: 600 - 1100mm

LED indicator: yes

Nebula Swing Turnstile



Model No. **DS225**



Exquisite and beauty is the most attractive feature in the first look. The turnstile is usually used for wide passageway and ideal for installing outside.

Super- elegant and European stylish turnstiles

Model DS225 is the simple type of nebula series turnstiles, one pcs can support 850-900mm arm for wide passageway, wheelchair, and pedestrian with large luggage can also pass. And the cabinet with 230 width which is flexible to install any type of RFID card reader directly in the gate itself.

DS225 Nebula Swing Turnstile with IP65 level, waterproof, no afraid of water or rain. It is ideal for both indoor and outdoor settings.

Framework material: 304 stainless steel + black tempered glass

Arm material: 304 stainless steel / acrylic glass

Size: 230 * 165 * 1050mm

Net weight: 25kg/pcs

Pass rate: 40 person/min

Pass width: ≤900mm

LED indicator: yes

Optical Swing Turnstile

HOT



Model No. DSN-20

- Nebula DSN-20 optical swing turnstile with unique design, stylish of modern and urbanization cabinet, typical swipe card panel, attractive blue LED strip, solid body crate, brushed stainless steel and high-end black painting process.
- The most advantage is that the passage width can reach to 650mm-1100mm, which is suitable for handicapped person with wheelchair or pedestrians with luggage.

Material: 304 stainless steel + acrylic glass
Size: 1600 * 150 * 980mm
Net weight: 75kg/pcs
Pass rate: 40 person/min
Pass width: 650-1100mm (one passage)

Optical Swing Turnstile



Model No. DS218

- DS218 Optical swing turnstile with 120mm cabinet is an elegant and slim solution for access control. The white tempered glass side panels with dazzling LED light which are more attractive and impressive, easily to catch pedestrian's eyes and enhance the artistry of the sites.
- Waterproof: IP65 level, no afraid of water or rain. It is ideal for both indoor and outdoor settings. The black tempered glass on the card panel which are firm and solid, not easy to be scratched.

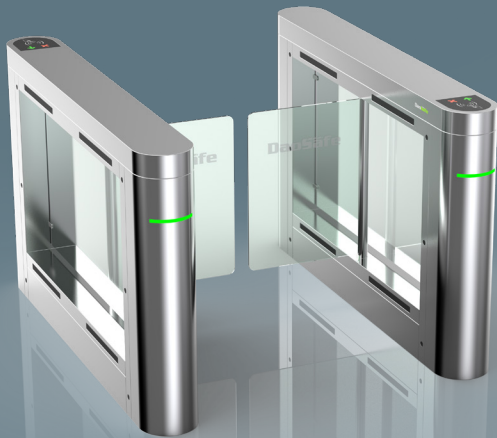
Material: 304 stainless steel + acrylic glass
Size: 1200 * 120 * 1020mm
Net weight: 70kg/pcs
Pass rate: 40 person/min
Pass width: 600-900mm (one passage)

Optical Swing Turnstile



The advantage of swing turnstile is that the passage width can reach to 600mm-1200mm, which is suitable for handicapped person or pedestrians with luggage. The turnstile is usually used in high-grade occasion.

Model No. DS212D



Material: 304 stainless steel

+ acrylic glass

Size: 1400 * 210 * 1000mm

Net weight: 65kg/pcs

Pass rate: 40 person/min

Pass width: 600-1000mm



Suitable for both indoor and outdoor environments

Model No. DS2000



Material: 304 stainless steel

+ acrylic glass

Size: 1400 * 280 * 1000mm

Net weight: 70kg/pcs

Pass rate: 40 person/min

Pass width: 600-1200mm



Suitable for both indoor and outdoor environments

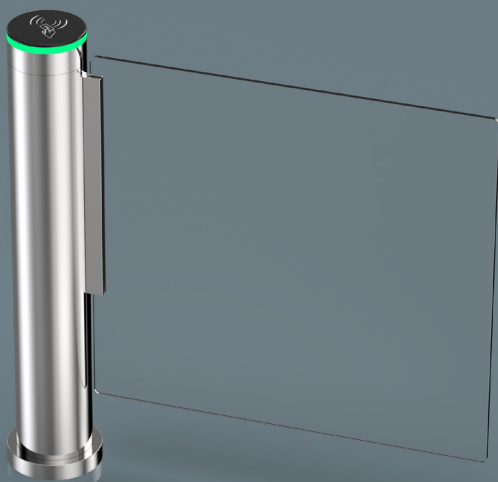
Cylinder Swing Turnstile



The advantage of swing turnstile is that the passage width can reach to 600mm-1200mm, which is suitable for handicapped person or pedestrians with luggage. The turnstile is usually used in high-grade occasion.

HOT

Model No. DS8000



Material: 304 stainless steel
+ acrylic glass

Size: 168 * 1050mm

Net weight: 70kg/pcs

Pass rate: 40 person/min

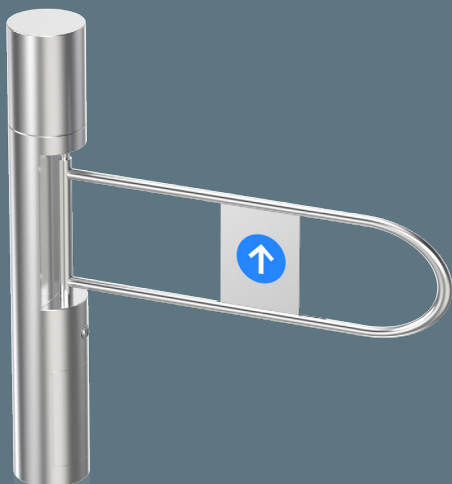
Arm height: 900-1800mm (optional)

Pass width: 600-900mm (one passage)



Suitable for both indoor and outdoor environments

Model No. DS205A



Material: 304 stainless steel

Size: 168 * 1050mm

Net weight: 25kg/pcs

Pass rate: 40 person/min

Pass width: 600-900mm (one passage)



Suitable for both indoor and outdoor environments

Optical Swing Turnstile Overview

NEW



DS-Q20

HOT



DSN-20

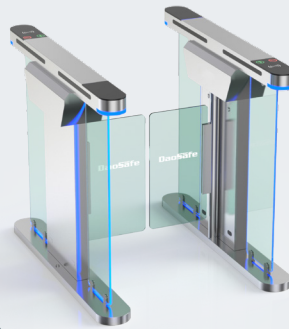


DS212D

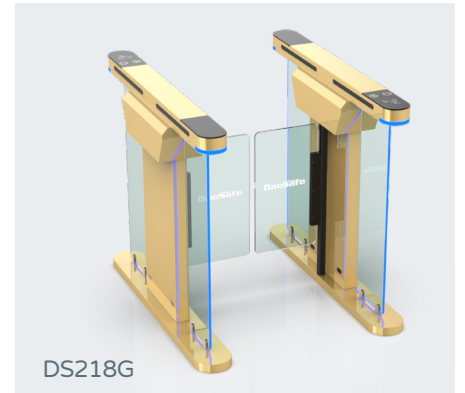


DS212

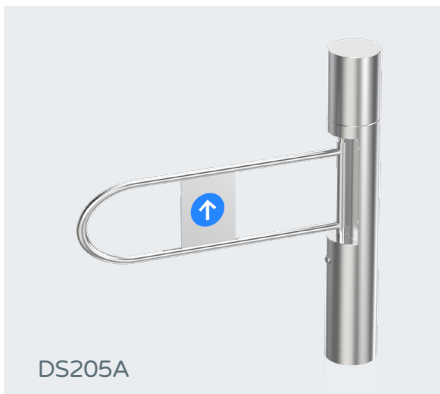
HOT



DS218



DS218G



DS205A



DS225 SS

HOT



DS225 Glass



DS2000

HOT



DS8000