



Model DSSP6003A

Pedestrian Security Gate (manual lock)

The DSSP6003A is a manually operated, simple type of half-height pedestrian gate, which is unlocked with a mechanical key on the exit sides. It is typically used either independently or in conjunction with a half-height turnstile to regulate access in areas requiring strict traffic control. This combination is the most common and ideal solution for managing access for package deliveries, carts, and individuals with disabilities.

Features

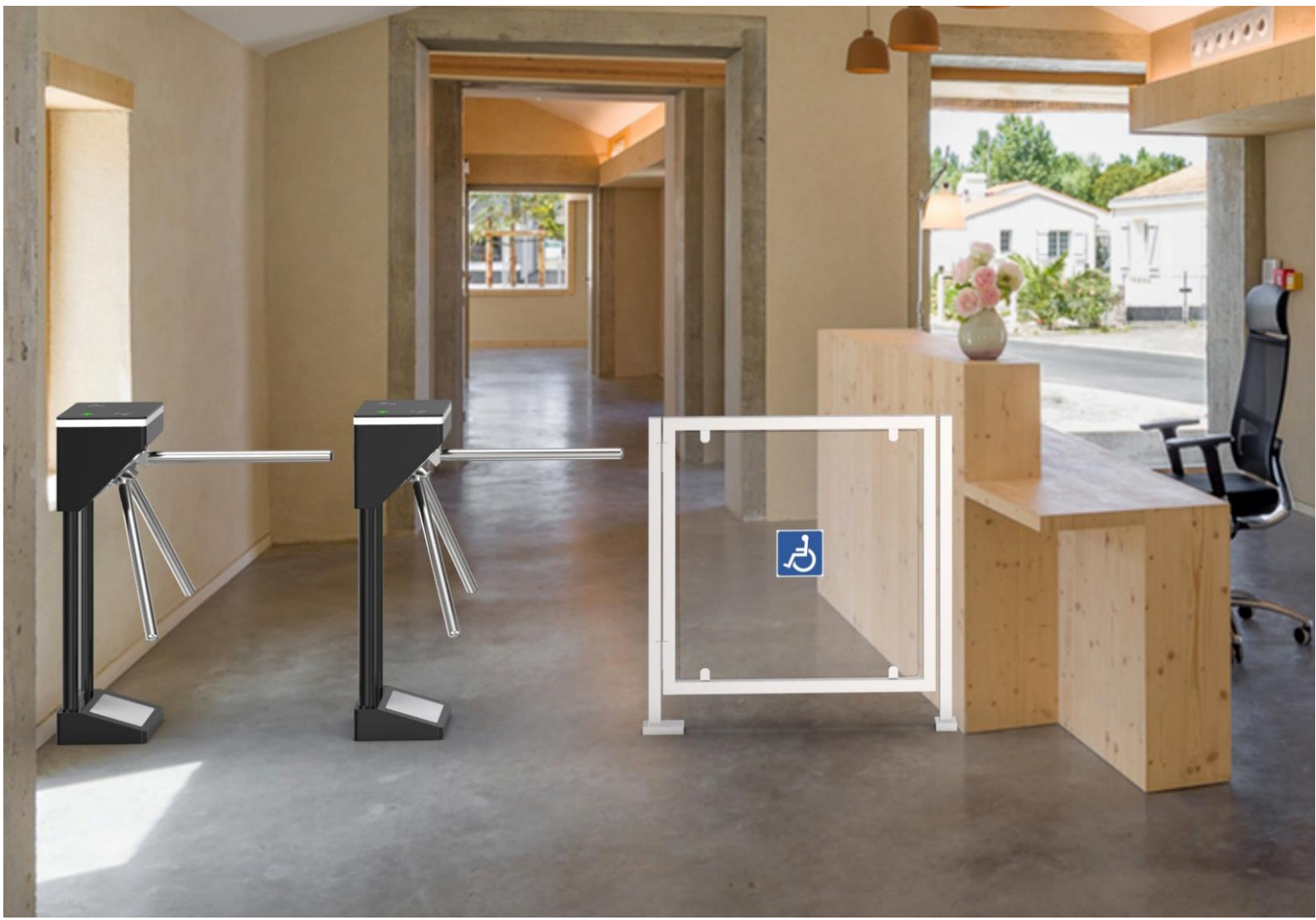
- The direction of door opening: one-way.
- Use keys to control entry or exit.
- 304 brushed stainless steel, durable and antirust.
- IP65 waterproof level, indoor/outdoor use.
- Easy to install and maintain.
- 3 years warranty support.

One way to
open the door



Customized Service

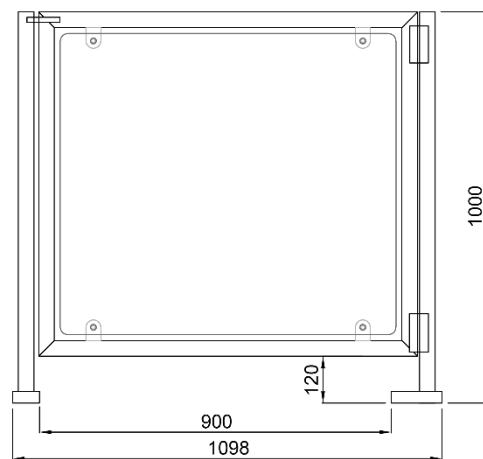
- Material optional.
- Appearance color can be customized based on installation environment.
- Dimensions can be customized to meet your request.
- Logo can be customized.
- Picture: high resolution and scene picture can be customized



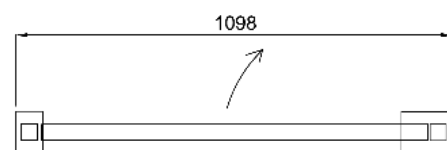
Specifications

Model No.	DSSP6003A
Type	Manual lock
Brand	Daosafe
Framework Material	304 Stainless Steel + Plexiglas
Dimension	1098 * 1000mm
Net Weight	25kg/pcs
Passage Width	900mm
Passing Direction	Single/bi-directional
Direction of Door Open	One way
MCBF	10 million
Operation Temperature	-25 °C ~ 70 °C
Operation Humidity	0 ~ 95% (No freeze)
Working Environment	Indoor / outdoor
Flow Rate	30 people per minute

Front View



Top View



Comparison

Model Photos



Model DSSP6003.	A	B	C
Opening Mode	Manual type	Manual type	Automatic type
Direction of Door Opening	One way	One way	Two ways
Electric Lock	×	✓	Motor with clutch
Access Control	×	Support any access controllers	Support any access controllers
Power Supply	×	✓	✓
LED Light	×	×	✓
Self Close	×	×	✓

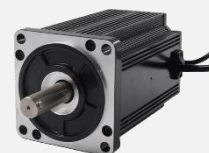
Details



key cylinder



Magnetic lock



Motor