



Model DS225G



Model DS225S

Model DS225

Nebula Swing Turnstile

DS225 nebula swing turnstile, exquisite and beauty is the most attractive feature in the first look.

Sensor optional, plexiglass/steel arm optional.

Hidden cover opening design, no "key & lock", making the product appearance integrated and more aesthetic.

The cabinet with 230 width which is flexible to install any type of RFID card reader directly in the gate itself.

One pcs can support 900mm arm for wide passageway, wheelchair, and pedestrian with large luggage can also pass.

Features

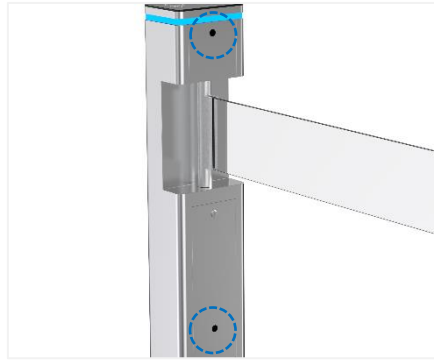
- Two way or one way working.
- Support integrated with any type of access control systems.
- Passage width can be extended to 900mm.
- Sensor optional.
- Low noise, system runs smoothly.
- Blue, green and red LED indicator display passing status.
- IP65 waterproof level, indoor/outdoor use.
- Fire safety requirements, arms open automatically.
- Easy to install and maintain.
- 3 years warranty support.

Customized Service

- Appearance color can be customized based on installation environment.
- Dimensions can be customized to meet your request.
- Logo can be customized.
- Arm plexiglass/steel width optional.
- Picture: high resolution and scene picture can be customized.



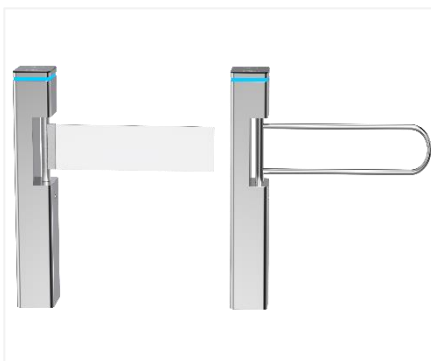
Logo Custom



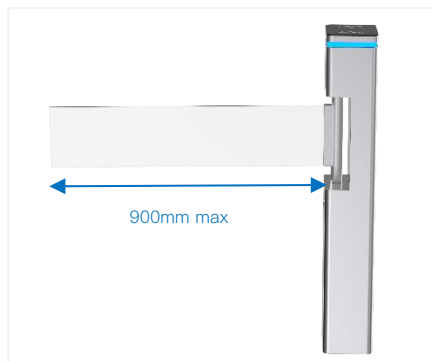
Infrared Sensor Optional



Hidden Cover Opening Design



Plexiglass/Steel Arm Optional



Wide Lane Optional



Anti-pinch Function

Access Control System

Daosafe turnstile gates can be well integrated with any 3rd party access control systems



Card Solution



QR/Bar Code Solution



Biometric Solution



Remote Control



Touchless Button



Card



QR Code



Fingerprint



Face



Palm Vein

DS225 with card solution installed at office



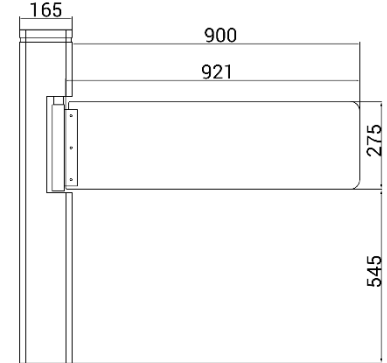
Specifications

Model No.	DS225
Type	Nebula Swing Turnstile
Brand	Daosafe
Framework Material	304 brushed stainless steel+ high end black tempered film glass
Arm material	304 stainless steel or plexiglass–transparency
Dimension	230* 165 * 1050mm
Net Weight	25kg/pcs
Passage Width	≤900mm
Passing Direction	Single directional / Bi-directional
MCBF	10 million
Power Supply	AC220V/110V, 50/60Hz
Operation Voltage	24V DC
Power Consumption	40W
Operation Temperature	-20 °C – 75 °C
Operation Humidity	0 ~ 95% (No freeze)
Waterproof Level	IP65
Working Environment	Indoor / Outdoor waterproof
Flow Rate	40 people per minute
LED Indicator	Unique blue green and red LED strip
Infrared Sensor	2 pairs (optional) up or down
Emergency	Automatic arm open when power off
Communication	Dry contact, Relay signal, RS485
Flexibility	Integrate with any access control

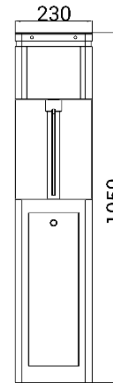
Dimensions

DS225G Dimensions

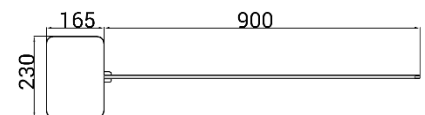
Front View



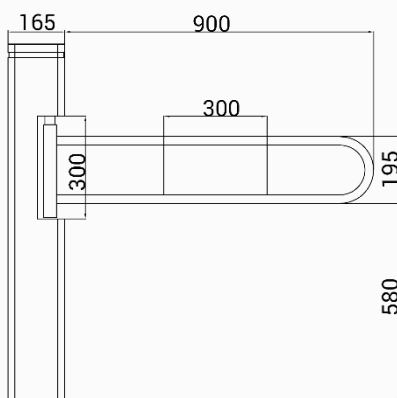
Side View



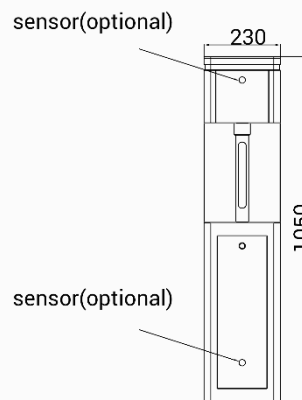
Top View



DS225S Dimensions



Front View



Side View



Top View